

ORGANISATION PROFILE



CONTACT DETAILS

For more info:

www.iwit.community

info@iwit.community

internationalwomenintransport@gmail.com

President (Mavis Mhlanga-Mochadibane): +27 (0)72 341 9251

Vice President (Yolisa Mabece): +27 (0)66 360 7011

General Secretary (Nomathemba Selesho): +27 (0)61 483 8021

MEMBERSHIP BENEFITS

International Women In Transport (IWIT) is a non-profit and non-governmental organisation whose key focus is to organise and empower women who are or wish to participate in the different elements of the transport industry across all modes. IWIT is a registered non-profit organisation that was established out of the need to have a home for women to organise themselves and participate in all aspects of the transport industry including empowerment.

STRATEGIC INTENT

To enable strategic inclusion of Women in all elements of policy making, industry development, planning and operation.

VISION

To be a preferred membership organisation by 2030, for Women in Transport including but not limited to employees in private and public sector, (businesses) owners in logistics service providers, road transport (private, public passenger and freight), aviation, maritime, rail (passenger and freight), transport consultants in all aspects and value chain contributors. To aggregate collaborative advocacy, knowledge and capacity building for women in all transport sub-sectors and value chain.

MISSION

- Organise, support and represent Women in Transport in every platform.
- Positively transform the industry for women's access to opportunities.
- Aggregate collaborative advocacy and visibility of Women interests in Transport.

MEMBERSHIP BENEFITS

GENERAL MEMBERSHIP

- Unfettered right to participate fully in the affairs of the organisation including to elect or be elected into leadership positions;
- Participate and benefit in the activities of the organisation and those of its partners;
- Being placed in the database of service providers and personnel for consideration in women empowerment programmes and training opportunities facilitated by the organisation;
- Access to collaborative projects in South Africa and elsewhere where the organisation has presence or partnership;
- Networking and conferencing opportunities locally and globally; and much more.

ASSOCIATE MEMBERSHIP

- Invitation and participation in the organisation activities and programmes on limited basis;
- Participate in research, training and capacity building opportunities with general members;
- Constitute a pool or resources of first option after general members for business and job opportunities with members and partners of the organisation; and much more

IWIT LEADERSHIP STRUCTURE



Mavis Mhlanga-Mochadibane
President

presidentmavis@iwit.community
mavis.iwit@gmail.com



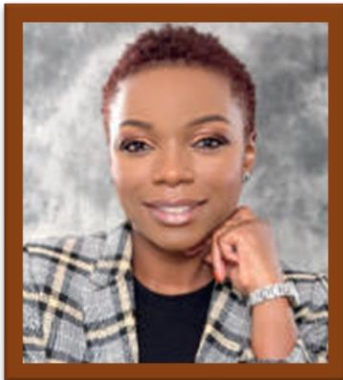
Yolisa Mabece
Vice President

ypyolisa@iwit.community
iwitvp@gmail.com



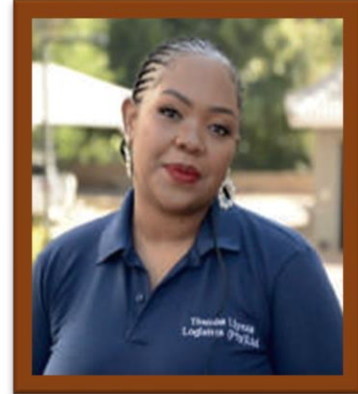
Lerato D. Makukule
Financial Executive

lerato@iwit.community
Lerato.iwit@gmail.com



Vanessa Leyka
Marketing

vanessa.leyka@seraphnetwork.com
vanessa@iwit.community



Nomathemba Selsho
General Secretary

nomathemba@iwit.community
nomathemba@iwit.community